



MONTHLY MEMBERSHIP PROGRESS REPORT

District 325A1

Results as of: 2/28/2017

GMT: NAZMUL HAQUE

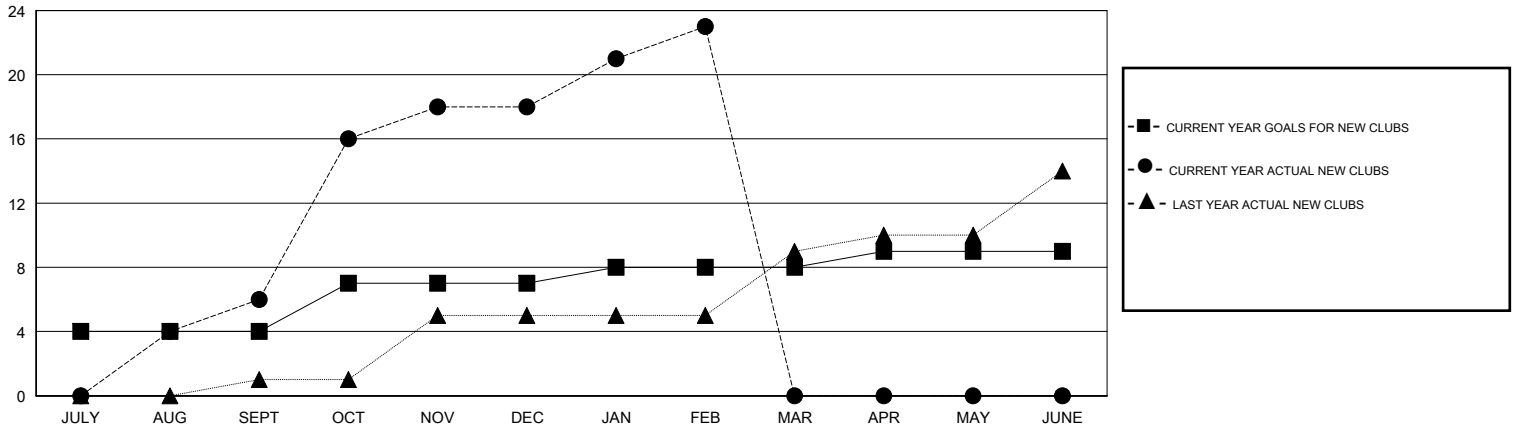
LOCATION NEPAL

GMT CA

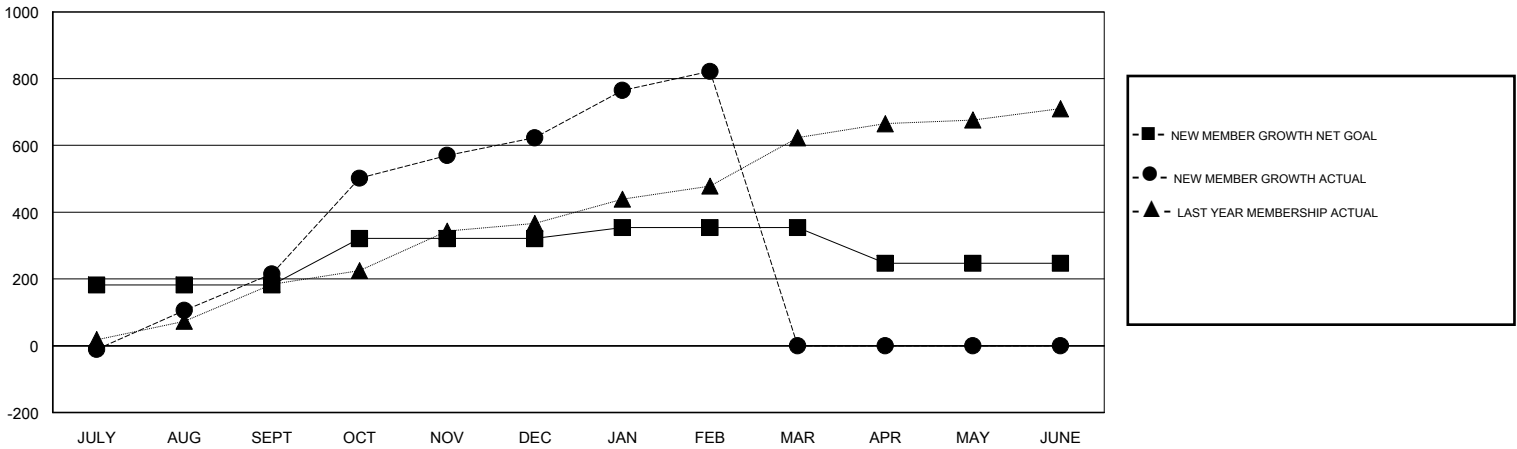
Clubs			
RESULTS FOR 2016-2017			
QUARTER	NEW CLUB GOAL	NEW CLUBS	DROPPED CLUBS
JULY/AUG/SEPT	4	6	0
OCT/NOV/DEC	3	12	0
JAN/FEB/MAR	1	5	0
APR/MAY/JUNE	1	0	0

Members			
RESULTS FOR 2016-2017			
QUARTER	NEW MEMBER GROWTH NET GOAL (not reinstated or transfers)	NEW MEMBER GROWTH ACTUAL (not reinstated or transfers)	DROPPED MEMBERS ACTUAL (including transfers)
JULY/AUG/SEPT	182	371	156
OCT/NOV/DEC	139	475	67
JAN/FEB/MAR	33	244	45
APR/MAY/JUNE	-107	0	0

GOALS AND ACTUAL NEW CLUBS CUMULATIVE



GOALS AND ACTUAL MEMBERS CUMULATIVE



DROPPED CLUBS: 0	92 CLUBS OF 128 ADDED 1 OR MORE NEW MEMBERS	GENDER DISTRIBUTION
		MALE 2,944 (74.10%)
		FEMALE 1,029 (25.90%)
DROPPED MEMBERS	CLICK HERE FOR CUMULATIVE MEMBERSHIP DATA	TOTAL FAMILY UNIT MEMBERS 1,922
DECEASED 4		FAMILY MEMBERS PAYING HALF DUES 1,215
CLUB CANCELLED 0		
OTHER 264		
TOTAL 268		